

The background of the slide is an aerial photograph of a city street intersection. A semi-transparent dark blue rectangle is overlaid on the left side, containing the text. On the right side of the image, there is a white geometric overlay consisting of a network of lines connecting various points, resembling a data network or a spatial analysis visualization. The image shows buildings with red-tiled roofs, streets with cars, and some green spaces.

Head Office News Victoria Persson Project Manager – Data Access and Integration

CONNECTING YOU TO MAPS, GEOSPATIAL AND LAND INFORMATION FOR EUROPE



#MAPSFOREUROPE

60+   **members** from the whole of geographical Europe

EUROGEOGRAPHICS ACTIVITIES

Well-established network for sharing knowledge, expertise and access to data



Sharing experiences and best practice



Representing our members interests



Fostering use and re-use of public sector geo-information

MAPS, CADASTRE, AND MORE

Our members provide data to help protect people, the planet and so much more



Environmental monitoring & management



Real-time data for pandemic response



Smarter, sustainable agriculture



Cleaner, safer, intelligent transport



Emergency responses



Aerial survey

TRUST & RELIABILITY

Our members empower society with trusted geospatial services



Trusted daily everywhere for secure ownership transactions, diligent policy elaboration and monitoring



Relied on by European institutions and UN, governments, businesses and citizens



Registered on the EU Transparency Register and bound by its code of conduct

Knowledge Exchange



Webinars



Events



KENs

2,000+ total participants

Members-only
webinars

Cadastre & Land
Registry, Policy,
Quality & INSPIRE
KENs

Workshops with
EuroSDR

Events extending
our reach beyond
NMCA communities

Talking Heads
programme

Permanent
Correspondents
Exchange

Participation in
member events and
one-on-one
meetings

Constant monitoring
of information, and
policy evolution, with
weekly updates

Representing your interests



Copyright © 2023 EuroGeographics

www.eurogeographics.org



Data Access and Integration



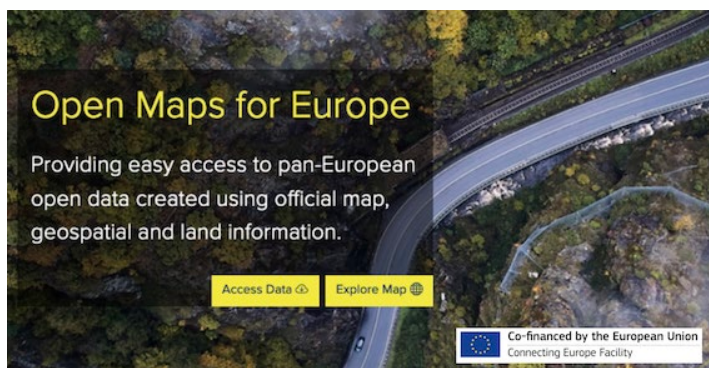
Delivering Open Maps for Europe to support Open Data and Re-Use of Public Sector Information.



Providing data for policy making, monitoring and measurement.



Meeting current and future user requirements to keep official geospatial data relevant.



European Environment Agency



OME2

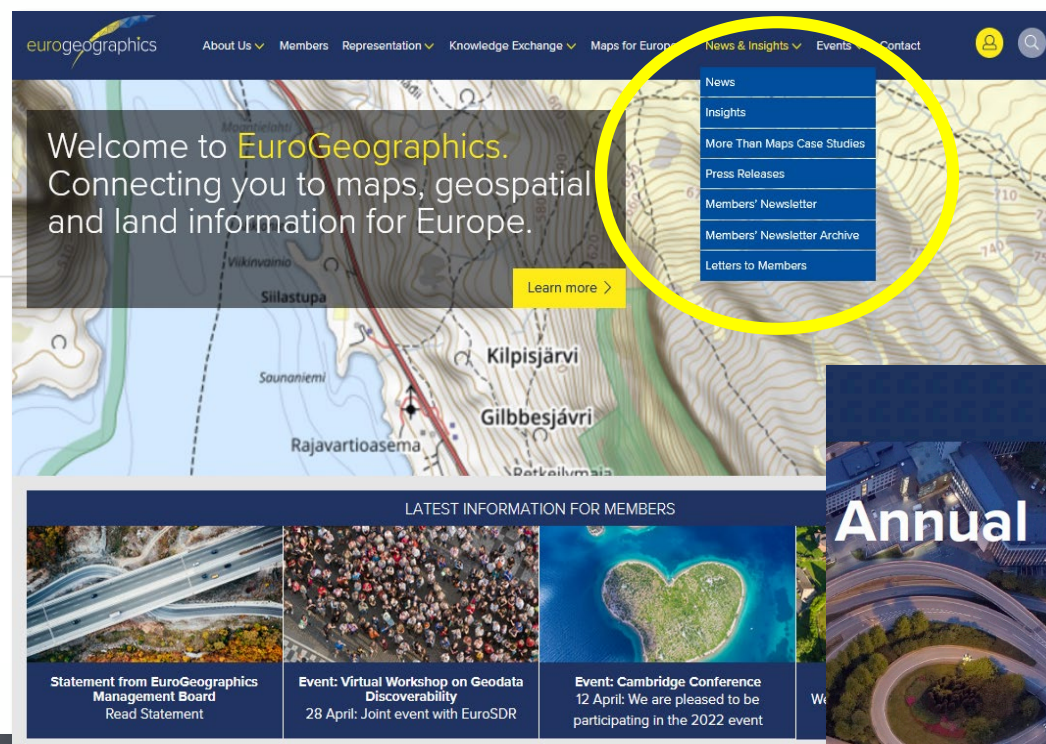
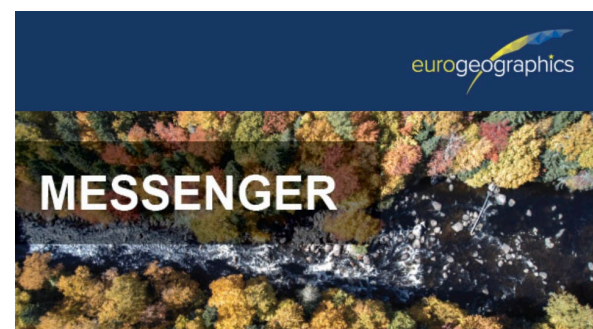
Digital Europe Programme
Grant Agreement No 101100625



Co-funded by
the European Union

Communications

Instagram



Your Association!



General Assembly 2023 Statistics

- 110 attendees
- 89 member organisations from 35 countries
- 11 guest organisations:
 - EuroSRD
 - Open Data Institute
 - ICA
 - GeoNovum
 - ConsultingWhere
 - Eurostat
 - European Environment Agency
 - Frontex
 - DG ECHO
 - University of Tallin
 - DG Connect





Your Management Board

Your Head Office



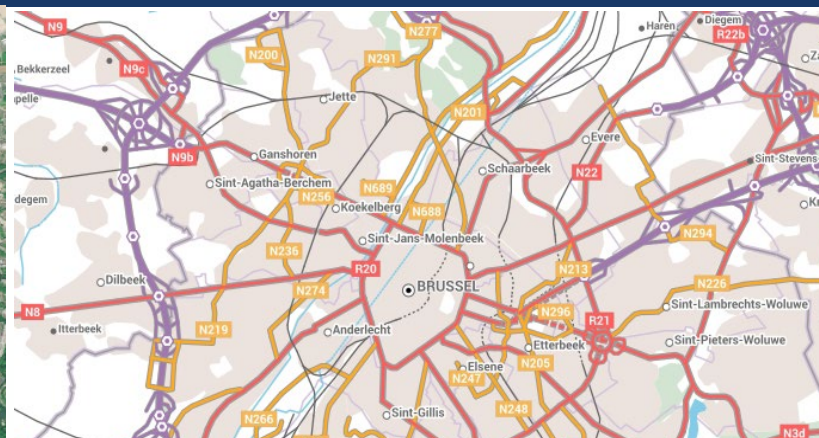
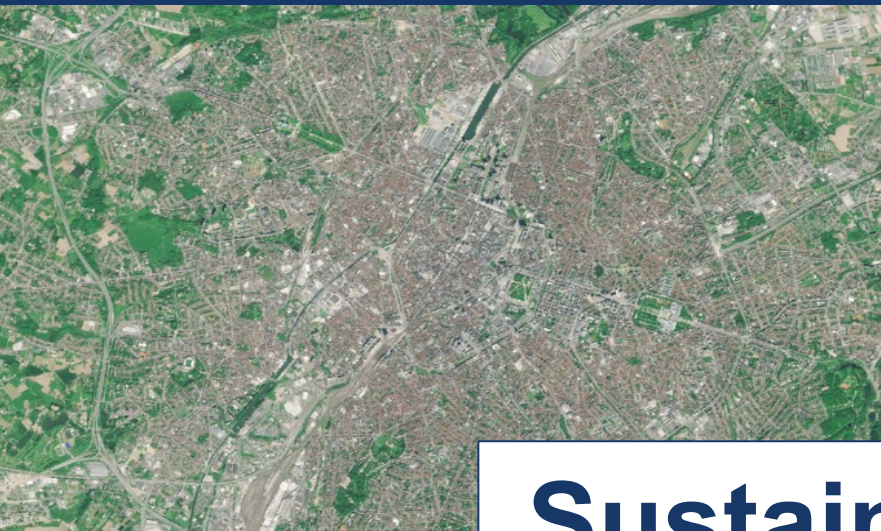
Proud to be: The voice of European National Mapping, Cadastral & Land Registry Authorities

An aerial photograph of a multi-lane highway with several cars. A white triangular mesh is overlaid on the right side of the road, extending into the surrounding landscape. The text 'OME2' is in a large, bold, white font, and the subtitle is in a smaller, bold, white font, both set against a dark, semi-transparent rectangular background.

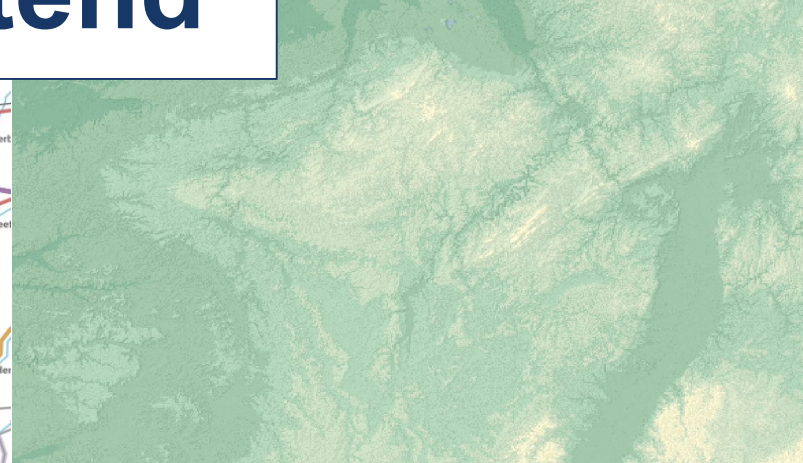
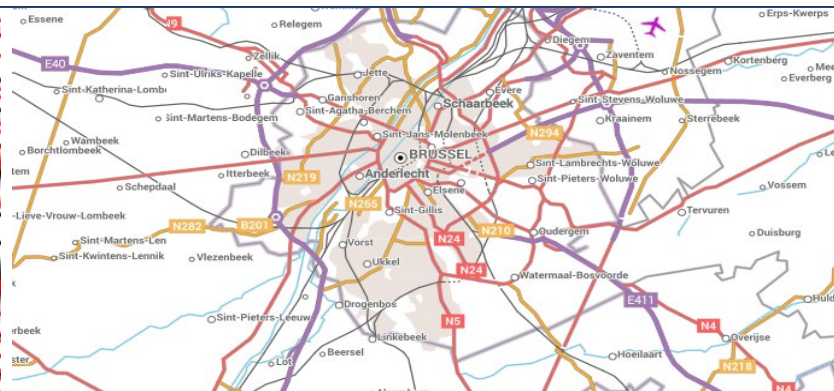
OME2

A foundation for future pan-European high-value datasets

Victoria Persson
Project Manager – Data Access and Integration
EuroGeographics



Sustain - Enhance - Extend



The background of the slide is a detailed topographic map. It features a complex network of brown and tan lines representing elevation and terrain. A semi-transparent dark grey rectangle is overlaid on the left side, containing the title text. On the right side, there is a triangular mesh overlay, with some triangles filled with a blue color, possibly representing water bodies or specific data points.

New Production Process for Topographic Data

User requirements



Large scale



Key Themes



Life-cycle
management



Harmonised &
edge-matched

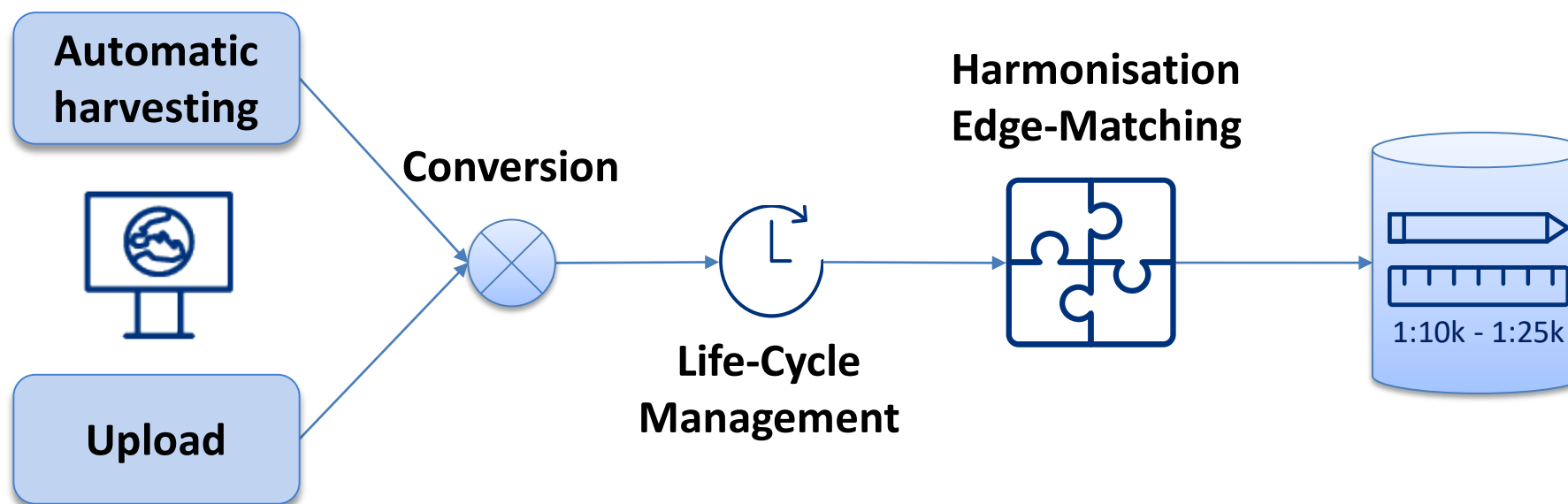


Authoritative



Geographical
Europe
coverage

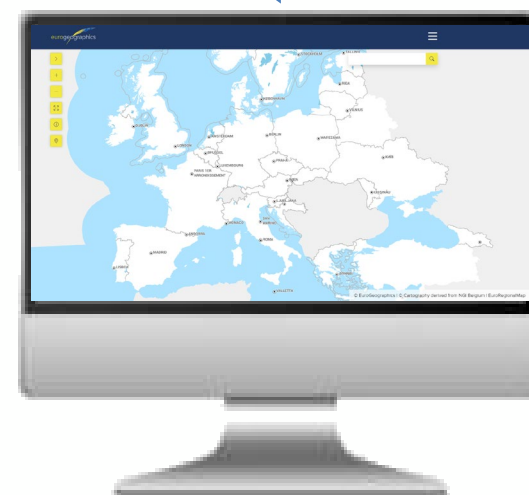
New production process



Prototype

10 countries 3 themes

- Administrative Boundaries
- Transport Networks
- Hydrography



OME Interface

Knowledge Exchange in OME2



Supports technical development

TDKEN – 5 topic groups

Launch for papers – SDQ Workshop October

Consortium

EuroGeographics – Co-Ordinator

IGN France

NGI Belgium

**Kadaster
Netherlands**

Spanish Cadastre

**Hellenic
Cadastre**

Subcontractors

MEMBERS

Thank you!

victoria.persson@eurogeographics.org
[linkedin.com/in/victoriapersson/](https://www.linkedin.com/in/victoriapersson/)